

Opposites



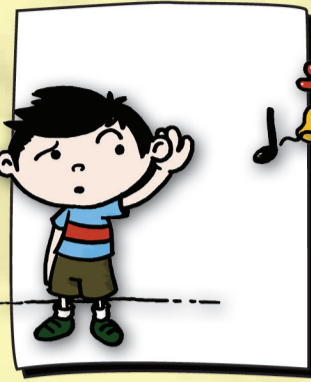
open
It's open.



shut
It's shut.



loud
It's loud.



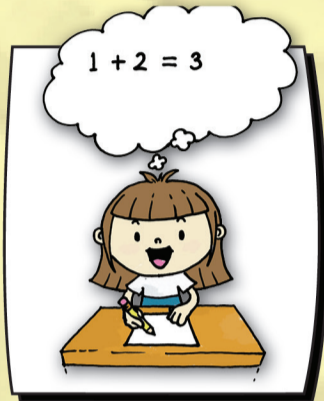
quiet
It's quiet.



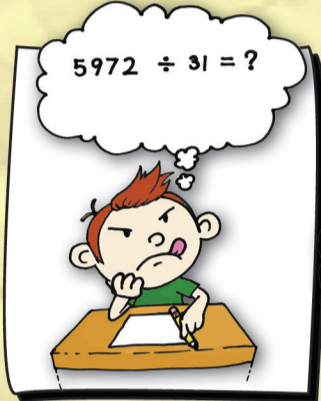
light
It's light.



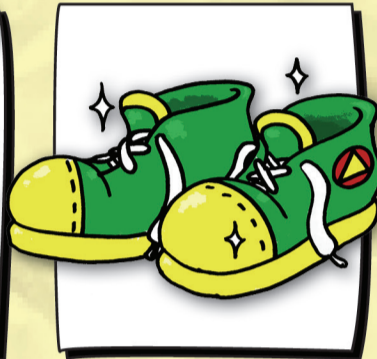
dark
It's dark.



easy
It's easy.



difficult
It's difficult.



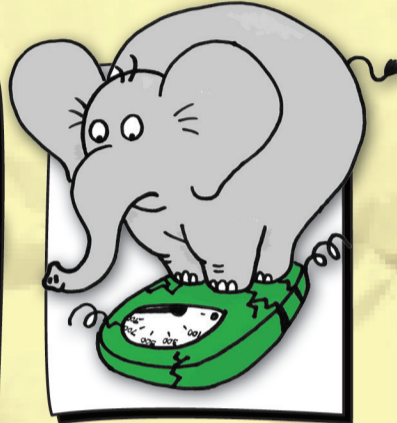
new
The shoes are new.



old
The shoes are old.



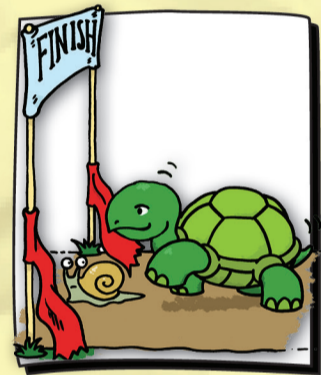
light
The butterfly is light.



heavy
The elephant is heavy.



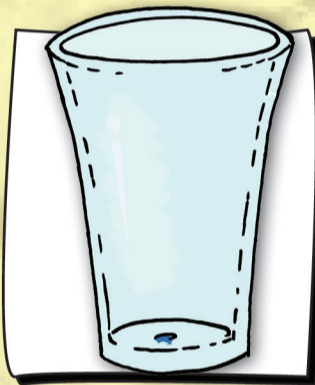
fast
The rabbit is fast.



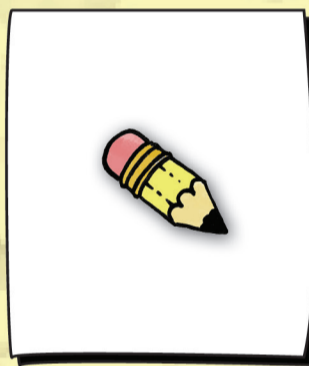
slow
The turtle is slow.



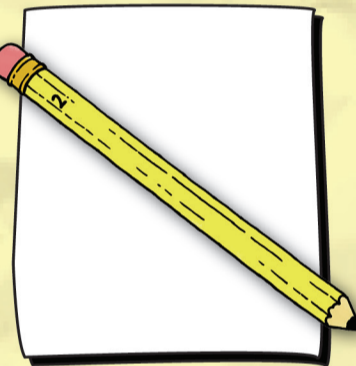
full
The glass is full.



empty
The glass is empty.



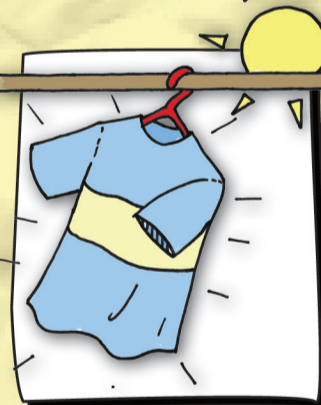
short
It's a short pencil.



long
It's a long pencil.



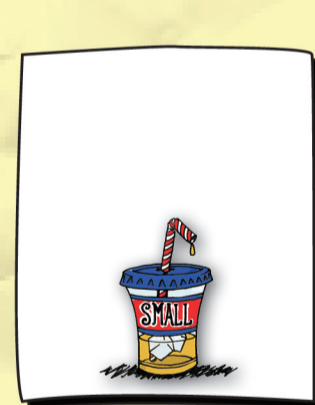
wet
It's a wet shirt.



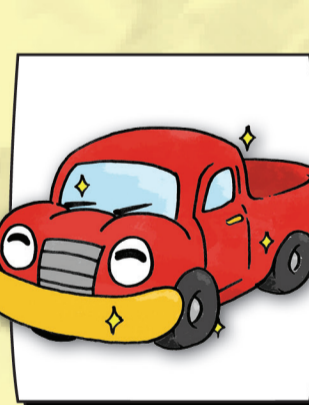
dry
It's a dry shirt.



big
It's a big cup.



small
It's a small cup.



clean
It's a clean truck.



dirty
It's a dirty car.

Q: Is (this door open)?

A. Yes, it is. / No, it's not. It's (shut).

Q: Which one is (fast)?

A. This one is (fast).

Q: Do you have (a short pencil)?

A. Yes, I do. / No, I don't. (It's long.)

Q: What is (quiet)?

A. A (mouse) is (quiet).

